



Head Start and Early Head Start



ANNUAL REPORT PROGRAM YEAR 2020–2021

The Northwest Michigan Community Action Agency Head Start

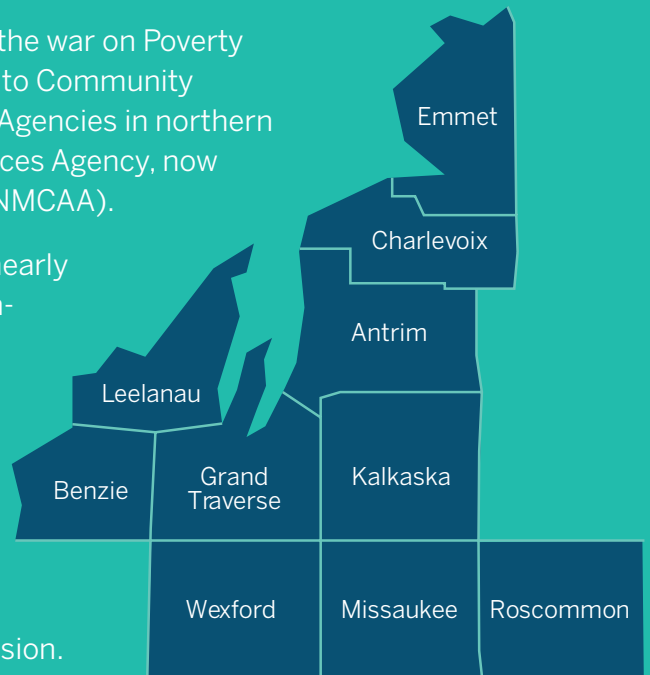
About NMCAA

In 1964, President Lyndon Johnson's administration waged the war on Poverty and passed the Economic Opportunity Act which gave birth to Community Action in the United States. In 1974, two Community Action Agencies in northern Michigan merged to form Northwest Michigan Human Services Agency, now known as Northwest Michigan Community Action Agency (NMCAA).

There are 30 Community Action Agencies in Michigan and nearly 1000 across the country. Like NMCAA, most are private non-profit companies.

Throughout the agency's 44-year history, NMCAA has remained dedicated to strengthening communities through helping individuals and families achieve greater economic security. This is accomplished by assisting residents in solving community problems as well as meeting their individual needs through case management counseling, advocacy, group participation, and service provision.

NMCAA serves the following ten counties: Antrim, Benzie, Charlevoix, Emmet, Grand Traverse, Kalkaska, Leelanau, Missaukee, Roscommon and Wexford.



The program has had a very positive impact on our family. Knowing exactly where my child stood developmentally was very important, seeing as how the first years of her life will affect how she learns and grows.



Mission Statement

Helping people by linking services, resources and opportunities.

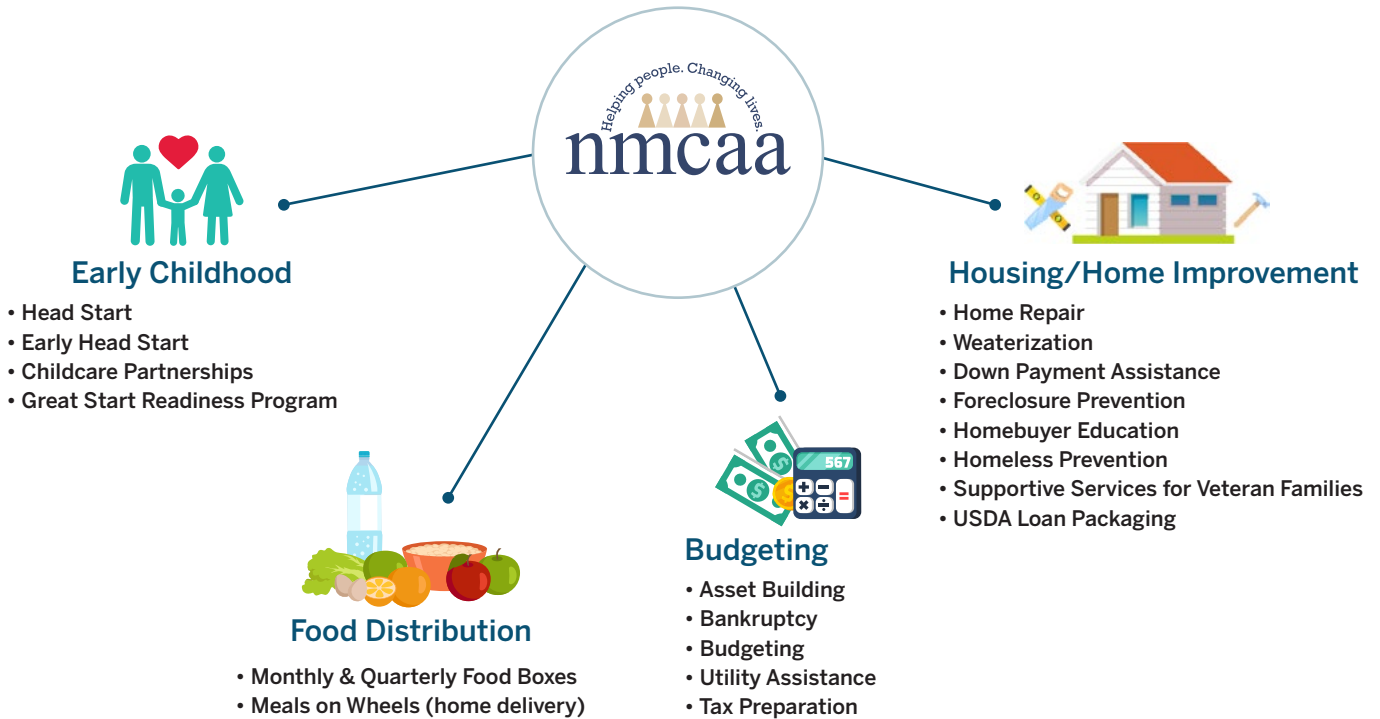
Vision Statement

NMCAA leads in strengthening communities by empowering individuals to overcome barriers, build connections, and improve their quality of life.

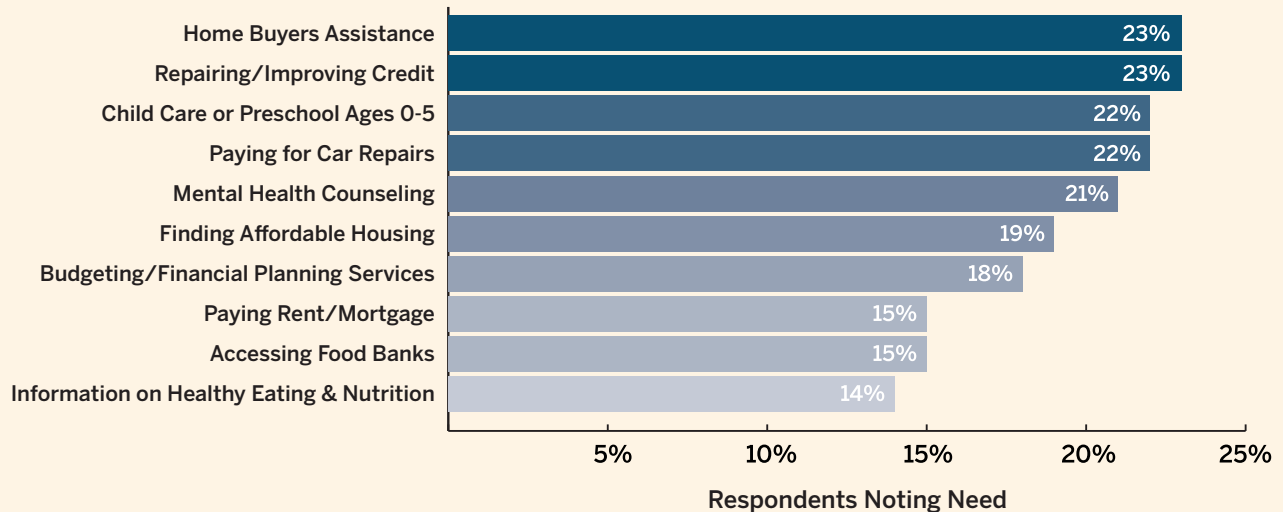
Community Needs Assessment

A complete needs assessment for Northwest Michigan Community Action Agency was last conducted in December 2021. A full copy of the report can be found on our agency website: www.nmcaa.net.

NMCAA Early Childhood Programs is just one program under the NMCAA Community Action Agency umbrella that supports families in obtaining resources and realizing their goals.



Snapshot of Community Needs throughout the NMCAA Service Area



Our Philosophy

We believe that children need strong families in order to develop into mature adults who are productive members of society. **Our goal is to nurture families.** We will seek whatever support is available and advocate for what is needed to enable the children in each family to be successful in school and beyond.



We were nervous with how our son would do being away from home for the first time but this program was wonderful for his educational and social development.

Program Options

NMCAA Early Childhood Programs recognize that families' needs may differ. Therefore, we offer a variety of service options.

	Part Day Center Based Classrooms	Extended Day Center Based Classrooms	Head Start Collaborative Centers (partnerships with local childcares)	Early Head Start Center Based Classrooms	Early Head Start Collaborative (partnerships with local childcares)	Early Head Start Home Based Services
Typical Service Months	September-May	September-June	September-mid August	September-mid August	September-mid August	Year Round
Child Contact Hours	4 days per week, 4 hours per day	4 days per week, 6-7 hours per day	48 weeks, children are offered care up to 10 hours per day	46 weeks, 6 hours per day	48 weeks, children are offered care up to 10 hours per day	46 weekly home visits per year
Parent Contacts	4 in the form of home visits and parent/teacher conferences					24 Socialization Experiences

Enrollment

Total Number of Children and Families Served, Average Monthly Enrollment

Funded Enrollment:

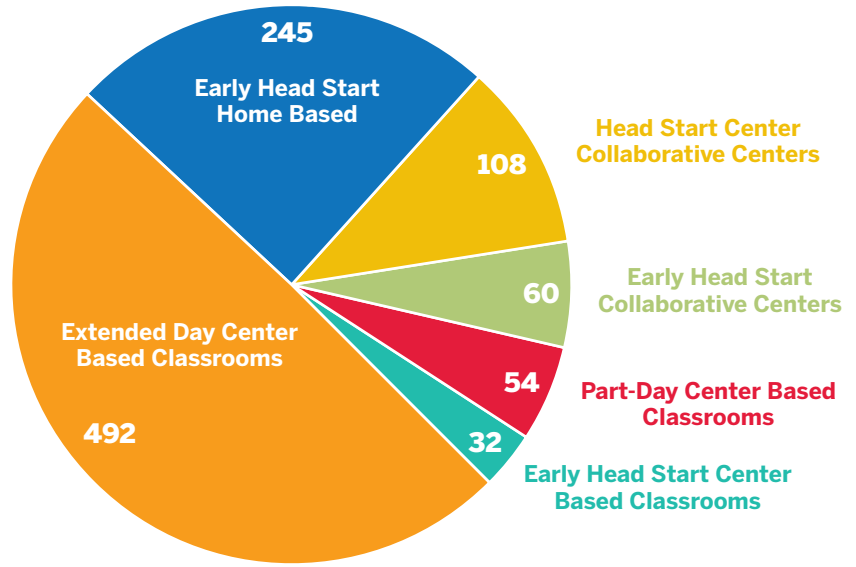
Head Start – 654
Early Head Start – 337

Total Number of Children Served:

Head Start – 603
Early Head Start – 435
Expectant Women – 11

Total Number of Families Served:

Head Start – 568
Early Head Start – 405



NMCAA Early Head Start and Head Start Programs are funded to serve 991 children each year. Average 2021 enrollment was lower than funded enrollment, due to the COVID 19 Pandemic. **The average monthly enrollment for Head Start was 483, or 74% of federally funded enrollment. The average monthly enrollment for Early Head Start was 302, or 90% of federally funded enrollment.** Head Start numbers are reflective of September 2020-May 2021, when all Head Start programs are in operation. Early Head Start numbers are reflective of September 2020-August 2021, since all Early Head Start program options operate year-round.

Percentage of Eligible Children Served (program year 2020–2021)

County	Eligible Children*	Children Served in Head Start	Children Served in EHS Center Based	Children Served in EHS Home Based	Total Children Served in HS and EHS	Percent of Eligible Children Served in HS and EHS**
Antrim	251	47	12	20	79	31.47%
Benzie	160	22	8	5	35	21.88%
Charlevoix	205	54	0	30	84	40.98%
Emmet	259	67	0	30	97	37.45%
Grand Traverse	703	144	24	50	218	31.00%
Kalkaska	233	41	8	20	69	29.61%
Leelanau	89	0	0	5	5	5.62%
Missaukee	219	54	0	30	84	38.36%
Roscommon	315	34	16	15	65	20.63%
Wexford	692	191	24	40	255	36.85%
Total	3,126	654	92	245	991	31.70%

*MI Kids Count Data 2020– Children Ages 0–5 Eligible for SNAP (eligibility equals 130% FPL)

** These numbers show only the percentage of eligible children served through NMCAA Head Start and Early Head Start programs and do not represent a total that includes children served through other early childhood program options in these counties.

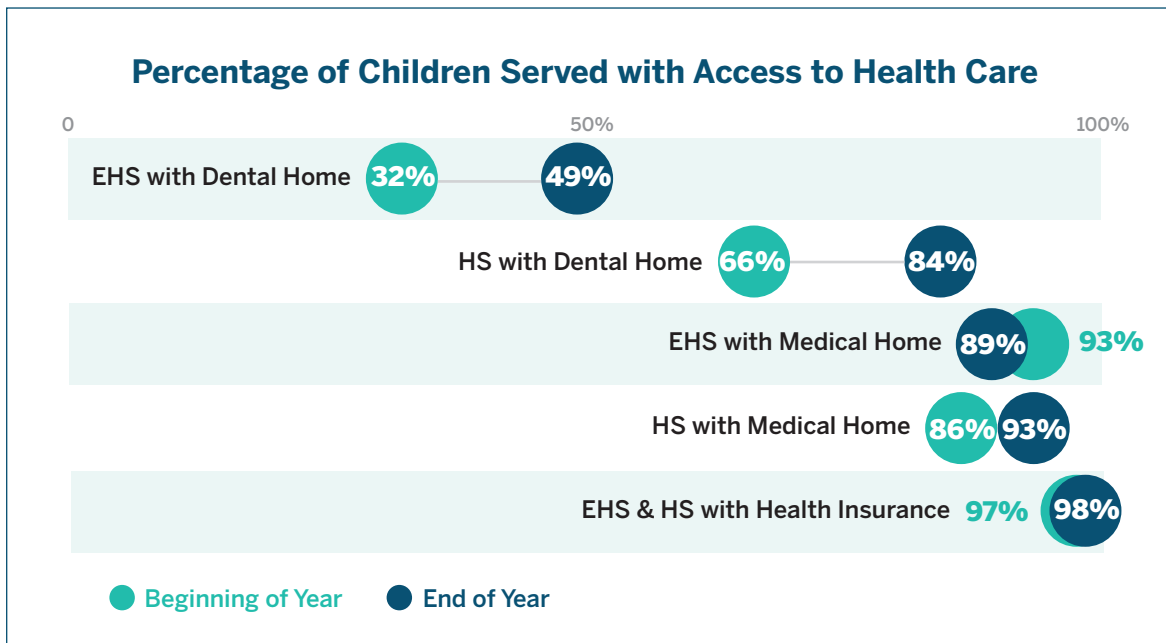
Comprehensive Approach

NMCAA recognizes the importance of the family on their child's journey to school readiness and provides a comprehensive approach to services that includes high-quality educational experiences for children, a focus on health (including physical, dental and social/emotional health) and resource/referral support to enhance overall family well-being.

Health is the foundation of school readiness!

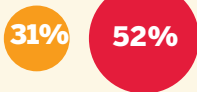
Physical Health

Our team supports families in overcoming barriers to accessing health care for their children so that they can stay healthy and ready to learn.



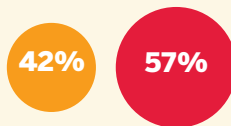
Health Service Completion Rates

Up to Date on Dental Exams or Age Appropriate Oral Health Care

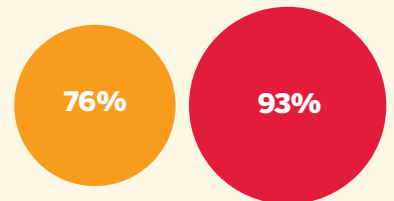


● Early Head Start ● Head Start

Up to Date on Age Appropriate Preventive Care



Up to Date on Immunizations



Family Involvement Activities

NMCAA Early Childhood Programs could not exist without the tremendous level of involvement put forth by the families of enrolled children. Participating in the program can help parents gain a better understanding of how the program is helping their child learn and grow. It also shows children that learning and school are important to their family.

Families can get involved in the program in the following ways:

Parents/Guardians can make decisions about the operation of the program by:

- Becoming an active member in the Parent Committee.
- Talking with other parents and staff about the program and ways that each person can help.
- Supporting and assisting their Policy Council Representatives with center information and concerns and/or as a Policy Council Representative.

Family Engagement Activities*

Examples:

- Parent Meetings
- Parent/Teacher Conferences
- Home Visits
- EHS Socializations
- Policy Council
- Volunteer Activities
- Parent Workshops

Parent Workshops*

Offered during the 2020–2021 Program Year:

- Self-Care
- Mindfulness
- Family Game Night

* Family Engagement Activities and Parent Workshops are developed in part with activities from *Your Journey Together*, a resilience building parenting curriculum.

The family is the primary force in preparing children for school and life, and children benefit when all of the adults who care for them work together.

(Bronfenbrenner, 2004)

COVID-19 Impacts

As identified by our Community Needs Assessment, the COVID-19 pandemic has had a profound negative impact on households in the region. Some impacts directly relate to the disease itself, but most are related to economic and social effects indirectly caused by the pandemic. In survey data, 59% of all respondents reported one or more economic impact on their households over the course of the pandemic.

During the 2020-2021 Program Year, our team worked to mitigate the impact of the pandemic on family well-being by connecting families to services to support their needs.

Number of Families Connected to Service

Assistance Enrolling in Education or Job Training	14	31
Financial Education/Debt Counseling	16	22
Mental Health Services	54	65
Housing Assistance	36	54
Emergency/Crisis Intervention (food, clothing, shelter)	122	190

of families were connected to a service supporting family well-being.

● Early Head Start ● Head Start

High Quality Programming

The Head Start Approach to School Readiness means that **children are ready for school, families are ready to support their children’s learning, and schools are ready for children.**

Our assessment system, Teaching Strategies GOLD, is aligned to our program curriculums, the Head Start Early Learning Outcomes Framework, and state benchmarks for school readiness. These tools assist teachers and home visitors, in conjunction with parents, in designing individualized lesson plans and learning experiences to support children in growing to their fullest potential.

Program Curriculum and Assessment System Information

Program	Curriculum	Assessment
Early Head Start Home Based (year round programming)	Parents as Teachers <ul style="list-style-type: none"> • Supports and engages parents in their child’s development • Provides early detection of developmental delays • Helps strengthen families 	Teaching Strategies GOLD <ul style="list-style-type: none"> • Four checkpoint periods that provide a snapshot of children’s developmental progress • Fall, winter, spring, and summer
Early Head Start Collaborative Centers and Center Based Classrooms	Creative Curriculum <ul style="list-style-type: none"> • Sets the stage for learning in six developmental areas with 23 objectives • Environmentally-based approach 	
Head Start Center Based Classrooms and Collaborative Centers		Teaching Strategies GOLD <ul style="list-style-type: none"> • Three checkpoint periods that provide a snapshot of children’s developmental progress • Fall, winter, and spring

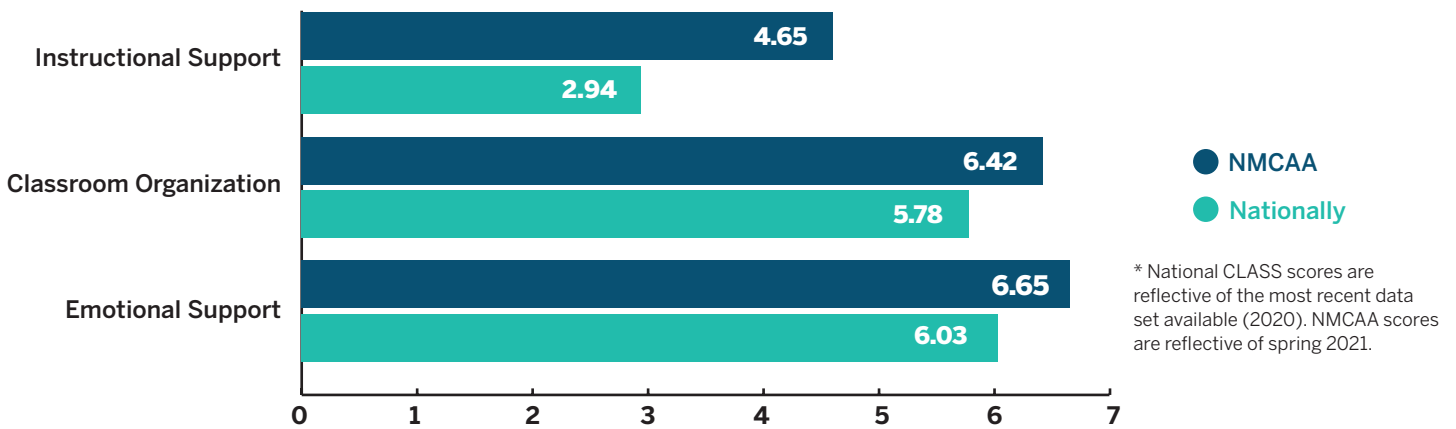
Supportive Learning Environments Promote Kindergarten Readiness

NMCAA Child Development Programs staff are committed to preparing children and their families for kindergarten. NMCAA is a step above in creating classrooms that are well organized and effective in nurturing children’s growth.

Classroom Assessment Scoring System (CLASS) is a tool used in Head Start classrooms to assess the quality of interactions between teachers and students. NMCAA regularly surpasses national average scores in each of the CLASS dimensions.

Further information on school readiness goals for all program options can be found at nmcaa.net. The results of the most recent reviews by the Secretary and Financial Audit can be found at nmcaa.net

NMCAA CLASS Compared to National Average



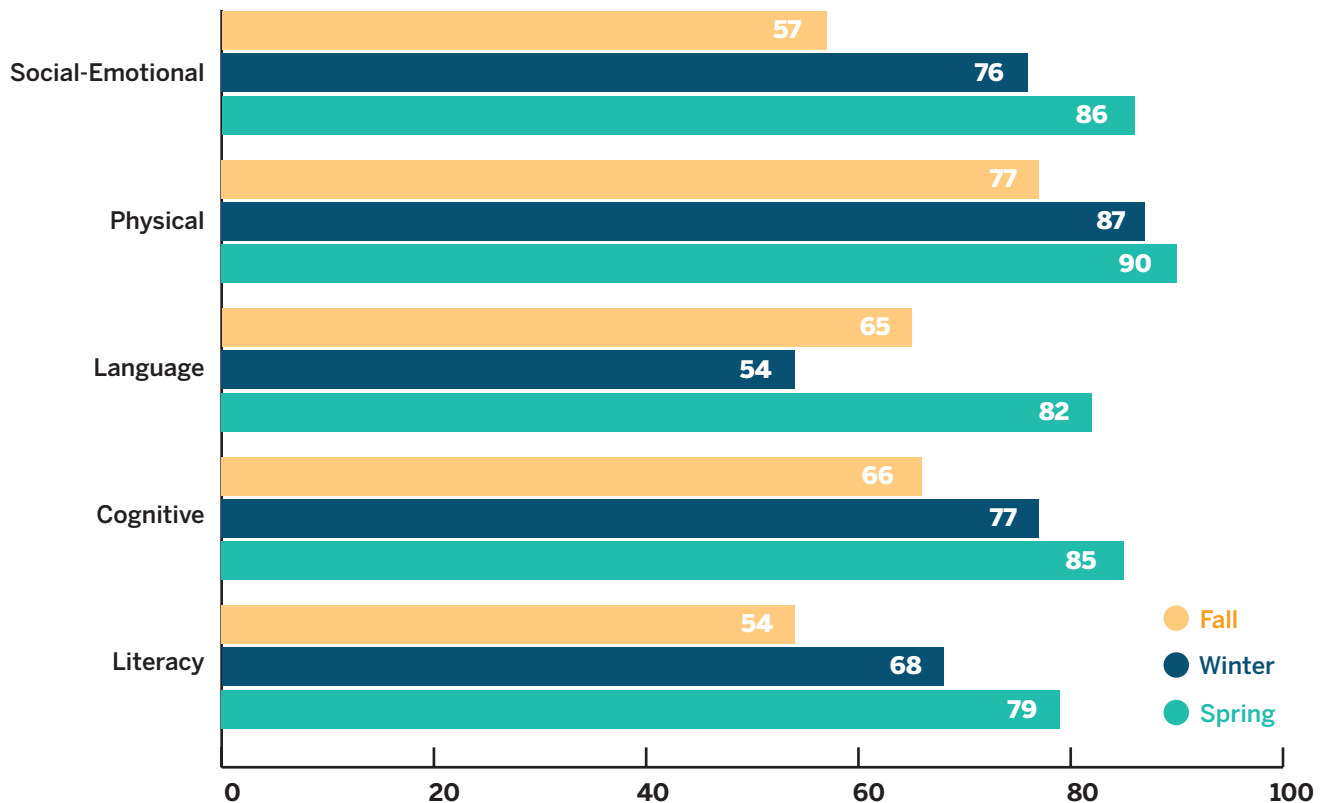
Instructional Support assesses the ways in which teachers implement the curriculum to effectively promote cognitive and language development.

Classroom Organization assesses classroom routines and procedures related to the organization and management of children’s behavior, time, and attention in the classroom.

Emotional Support assesses the degree to which teachers establish and promote a positive climate in their classroom through their everyday interactions.

Head Start Assessment Scores

Fall 2020 – Spring 2021



Funding

Total Amount of Public and Private Funds Received

Head Start

Revenue Fiscal Year 2021	Cash	Non-Cash
Department of Health and Human Services – Federal Cash	\$6,743,441	
USDA – Federal Cash	\$242,769	
Other Local Government Funding Agreement with Local School Districts to operate 4 year old programs (GSRP)	\$694,895	
Other Funding	\$78,335	
Private Community Foundation Funding for Central Lake Preschool	\$414	
Other Funding		\$680,591
Non-Federal Share		
Total	\$7,759,854	

Early Head Start

Revenue Fiscal Year 2021	Cash	Non-Cash
Department of Health and Human Services – Federal Cash	\$4,006,093	
USDA – Federal Cash	\$7,288	
Other Income	\$215	
Non-Federal Share		\$692,884
Total	\$4,013,596	

Budget Expenditures and Proposed Budget for Fiscal Year 2021

Head Start

Fiscal Year 2021	Budget	Actual
Personnel	\$3,677,434	\$3,266,003
Fringe Benefits	\$739,931	\$612,670
Travel	\$7,800	0
Equipment	0	0
Supplies	\$209,757	\$427,088
Contractual	\$776,656	\$1,152,902
Other	\$1,012,190	\$947,291
Total Direct Charges	\$6,423,768	\$6,405,955
Indirect Charges	\$611,953	\$580,669
Total	\$7,035,721	\$6,986,624
USDA Reimbursement		-\$242,769
TOTAL		\$6,743,855

Early Head Start

Fiscal Year 2021	Budget	Actual
Personnel	\$2,111,510	\$2,000,146
Fringe Benefits	\$429,168	\$392,090
Travel	\$9,150	0
Equipment	0	0
Supplies	\$134,395	\$170,346
Contractual	\$593,537	\$544,532
Other	\$567,576	\$556,446
Total Direct Charges	\$3,845,336	\$3,663,561
Indirect Charges	\$367,002	\$349,976
Total	\$4,212,338	\$4,013,537
USDA Reimbursement		-\$7,228
TOTAL		\$4,006,309

Additional Funding Received

CARES Supplement FY21	Budget	Actual
Personnel	\$92,094	\$84,932
Fringe Benefits	\$7,907	\$9,308
Equipment		\$96,738
Supplies	\$310,000	\$71,878
Contractual		\$15,274
Other	\$381,725	\$67,787
Total Direct Charges		\$345,917
Indirect Charges	\$79,172	\$24,918
Total	\$870,898	\$370,835

CRRSA	Budget 4/1/21-3/31/23	Actual FY21
Personnel	\$111,000	\$96,021
Fringe Benefits	\$27,000	\$12,759
Equipment		
Supplies	\$52,000	\$11,715
Contractual	\$20,000	
Other	\$61,145	\$18,785
Total Direct Charges	\$271,145	\$139,279
Indirect Charges	\$27,115	\$13,928
Total	\$298,260	\$153,207

ARP	Budget 4/1/21-3/31/23	Actual FY21
Personnel	\$698,159	\$83,002
Fringe Benefits	\$168,052	\$7,942
Equipment	\$97,782	
Supplies	\$122,934	
Contractual		\$10,664
Other		\$30,441
Total Direct Charges	\$1,086,827	\$132,049
Indirect Charges	\$98,904	\$13,205
Total	\$1,185,732	\$145,254
USDA Reimbursement		-\$7,024
TOTAL		\$138,230



It takes a village to raise a child and the skills my child learned were things I would not have thought about—great resources and new ideas and approaches to everyday life.



The socialization was a wonderful start in preparing my daughter to positively interact with teachers and her peers. We feel very prepared to start preschool and very confident continuing my daughters education at home.





Helping People.
Changing Lives.



Northwest Michigan Community Action Agency
3963 Three Mile Road | Traverse City, MI 49686
231.947.3780 | 800.632.7334 | nmcaa.net